



Sketch

NATADORA

Tolv

UPHOLSTERY  
CUSTOMISATION

**GLOBEWEST**



TOLV Pensive 2 Seater Sofa in Cigar Leather/Smoked Oak

## Upholstery & Timber Customisation

**Handpicked by our local design team, our stable of International furniture brands offers the highest quality craftsmanship.**

And now you can select from a comprehensive palette of materials and colours to customise your favourite Sketch, Natadora and Tolv upholstered products.

### 1. CHOOSE YOUR BRAND

Sketch – Take a journey into Scandinavian interiors

Natadora – Refined elegance for timeless appeal

Tolv – A framework for living where every moment matters

### 2. SELECT A STYLE

Visit our website and select the 'customisable' filter to explore the array of customisable products:

Sofas | Occasional Chairs | Ottomans

Dining Chairs | Barstools | Bench Seats & more

### 3. PICK YOUR MATERIAL & COLOUR

If our core colours don't meet your brief, have your preferred silhouette made-to-order from a palette of 114 luxurious leathers, beautiful linens, striking woven options and 7 timber finishes.

### 4. VISUALISE YOUR PRODUCT

**Visit** a showroom to experience a Customisation Hub.

**Contact** your closest showroom to request a free fabric swatch.

### 5. PLACE YOUR ORDER

For assistance, contact your local sales team.

Purchases via authorised stockists and design professionals only.

No minimum order. Lead time is 90 – 130 days from order confirmation and deposit.

# GLOBEWEST





# Contents

## SELECT YOUR MATERIAL

|         |    |
|---------|----|
| Linen   | 4  |
| Woven   | 8  |
| Leather | 24 |
| Timber  | 28 |

## Linen Custom Upholstery Options



**Optic White Linen**  
R9 Libeco L651 0801-0020 Optic White  
100% Linen - Stonewashed  
Martindale: 22,000



**Ivory Linen**  
R3 Asa 0012 Ivory  
100% Linen  
Martindale: 20,000



**Natural Linen**  
R9 Libeco L651 0023 Natural  
100% Linen - Stonewashed  
Martindale: 22,000



**Barley Linen**  
R5 Libeco 0003 Oatmeal  
100% Linen  
Martindale: 22,000



**Jute Linen**  
R3 Calvados 0022 Jute  
100% Linen  
Martindale: 26,000



**Apricot Linen**  
R9 Libeco L651 4230 Apricot  
100% Linen - Stonewashed  
Martindale: 22,000



**Momo Linen**  
R3 Asa 0056 Momo  
100% Linen  
Martindale: 20,000



**Rust Linen**  
R3 Asa 0010 Cinnamon  
100% Linen  
Martindale: 20,000

### IMPORTANT

- The swatches represented in this catalogue may differ slightly from actual.
- Please request a swatch prior to confirming your order.
- Options as at March 2025. \*Not all fabrics available on all models. Talk to our sales team.

### SPECIFICATIONS

Composition varies by material.

[globewest.com.au/upholstery-customisation-international-brands](https://globewest.com.au/upholstery-customisation-international-brands)

### DISCLAIMER - 100% LINEN

100% Linen upholstery is very delicate and may not be suitable for all Sketch, Tolv and Natadora models. Please contact the sales team to discuss the suitability of 100% Linen on your chosen product.



SKETCH Island Modular Sofa in Momo Linen

## Linen Custom Upholstery Options



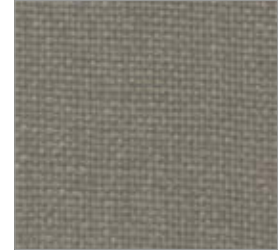
**Snow Linen**  
R3 Yves 0099 Snow  
100% Linen  
Martindale: 19,000



**Stone Linen**  
R3 Yves 0001 Stone  
100% Linen  
Martindale: 19,000



**Pewter Linen**  
R3 Asa 0002 Pewter  
100% Linen  
Martindale: 20,000



**Charcoal Linen**  
R6 Libeco 3957 Smoke  
100% Linen  
Martindale: 19,000



**Bone Linen**  
R3 Asa 0009 Bone  
100% Linen  
Martindale: 20,000



**Solder Grey Linen**  
R3 Asa 0005 Iron  
100% Linen  
Martindale: 20,000



**Jade Linen**  
R9 Libeco L651 4223 Jade  
100% Linen - Stonewashed  
Martindale: 22,000



**Kale Linen**  
R3 Asa 0017 Kale  
100% Linen  
Martindale: 20,000



**Ink Linen**  
R3 Asa 0051 Ink  
100% Linen  
Martindale: 20,000

### IMPORTANT

- The swatches represented in this catalogue may differ slightly from actual.
- Please request a swatch prior to confirming your order.
- Options as at March 2025. \*Not all fabrics available on all models. Talk to our sales team.

### SPECIFICATIONS

Composition varies by material.

[globewest.com.au/upholstery-customisation-international-brands](http://globewest.com.au/upholstery-customisation-international-brands)

### DISCLAIMER - 100% LINEN

100% Linen upholstery is very delicate and may not be suitable for all Sketch, Tolv and Natadora models. Please contact the sales team to discuss the suitability of 100% Linen on your chosen product.





SKETCH Island Modular Sofa in Kale Linen

## Woven Custom Upholstery Options



**White Blend**  
R2 Flanders 0001 White  
55% Linen, 45% Cotton  
Martindale: 29,000



**Neige**  
R4 Alpaca 3146 Neige  
94% Polyester, 6% Cotton  
Martindale: 100,000



**Milk Boucle**  
R2 Bigello 0002 Milk  
54% Polyester, 46% Acrylic  
Martindale: 50,000



**Blanc**  
R3 Sahara 0001 Blanc  
68% Cotton, 27% Linen, 5% Polyester  
Martindale: 30,000



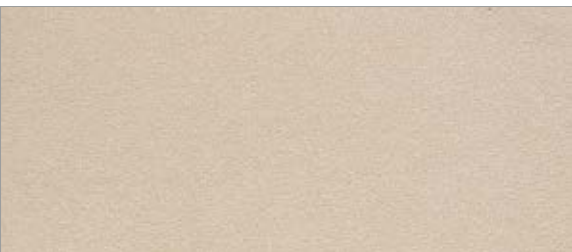
**Panna Cotta**  
R3 Cobbler 0001 Panna Cotta  
31% Polyester, 22% Wool, 22% Rayon, 13% Acrylic, 9% Linen, 3% Cotton  
Martindale: 20,000



**Fawn Fleece**  
R7 Fleece 0015 Fawn  
45% Recycled Polyester, 30% Wool, 11% Viscose, 9% Acrylic, 5% Polyamid  
Martindale: 30,000



**Yeti**  
R7 Sherpa 0300 Yeti  
38% Cotton, 52% Viscose, 10% Linen  
Martindale: 30,000



**Ecru**  
R1 Nano-Suede 0110-02 Ecru  
100% Polyester  
Martindale: 20,000



**Nude Speckle**  
R4 Finestre 0203 Nude  
49% Cotton, 32% Viscose, 16% Linen, 3% Polyester  
Martindale: 20,000

### IMPORTANT

- The swatches represented in this catalogue may differ slightly from actual.
- Please request a swatch prior to confirming your order.
- Options as at March 2025. \*Not all fabrics available on all models. Talk to our sales team.

### SPECIFICATIONS

Composition varies by material.

[globewest.com.au/upholstery-customisation-international-brands](https://globewest.com.au/upholstery-customisation-international-brands)

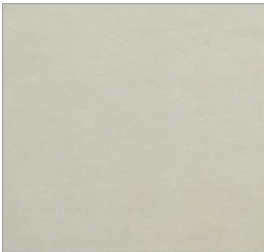
## Woven Custom Upholstery Options



**Gesso**  
R2 West Lake 0015 Gesso  
52% Polyester, 25% Acrylic, 10% Viscose, 7% Linen, 6% Cotton  
Martindale: 100,000



**Oatmeal**  
West Lake 01 Oatmeal  
52% Polyester, 25% Acrylic, 10% Viscose, 7% Linen, 6% Cotton  
Martindale: 100,000



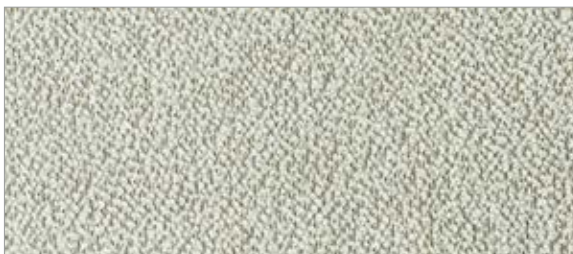
**Silver Grey Velvet**  
R6 Conte 1108 Silver Grey  
93% Cotton, 7% Rayon  
Martindale: 50,000



**Pearl**  
R3 Alice 1232 Pearl  
100% Polyester  
Martindale: 84,000



**Limestone**  
R2 Summer 003 Woodland  
62% Cotton, 20% Linen, 18% Viscose  
Martindale: 35,000



**Frost**  
R6 Salix 0004 Snow  
40% Polychloral, 29% Viscose, 15% Polyamide, 9% Polyester, 7% Wool  
Martindale: 50,000



**Macadamia**  
R4 Aman 1601 Macadamia  
42% Polyester, 16% Polychloral, 42% Cotton  
Martindale: 25,000



**Ivory**  
R2 Summer 002 Ivory  
62% Cotton, 20% Linen, 18% Viscose  
Martindale: 35,000



**Sandstone**  
R2 Alba 007A Sandstone  
56% Polyester, 44% Acrylic  
Martindale: 25,000

### IMPORTANT

- The swatches represented in this catalogue may differ slightly from actual.
- Please request a swatch prior to confirming your order.
- Options as at March 2025. \*Not all fabrics available on all models. Talk to our sales team.

### SPECIFICATIONS

Composition varies by material.

[globewest.com.au/upholstery-customisation-international-brands](http://globewest.com.au/upholstery-customisation-international-brands)

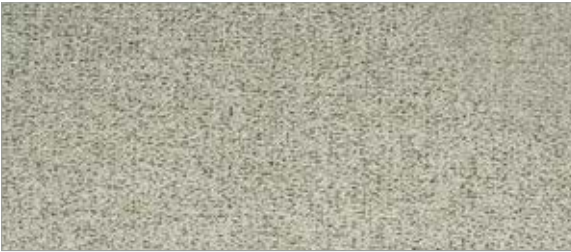
## Woven Custom Upholstery Options



**Vapor**  
R3 Atlas 0001 Vapor  
60% Polyester, 20% Acrylic, 13% Cotton, 7% Wool  
Martindale: 20,000



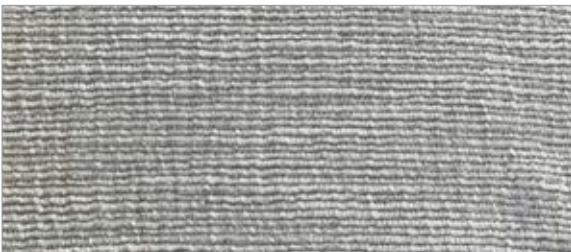
**Speckle Boucle**  
R2 Bigello 0003 Salt & Pepper  
54% Polyester, 46% Acrylic  
Martindale: 50,000



**Mist**  
R6 Carioca 0003 Mist  
33% Polyacrylic, 29% Cotton, 22% Polyester, 8% Linen, 8% Viscose  
Martindale: 40,000



**Diamond**  
R2 West Lake 04 Diamond  
52% Polyester, 25% Acrylic, 10% Viscose, 7% Linen, 6% Cotton  
Martindale: 100,000



**Fog**  
R7 Sherpa 0310 Fog  
38% Cotton, 52% Viscose, 10% Linen  
Martindale: 30,000



**Pebble**  
R5 Yuna 3705 Pebbledash  
56% Cotton, 32% Polychlal, 6% Wool, 5% Polyester  
Martindale: 30,000



**Mushroom**  
R3 Atlas 0003 Mushroom  
60% Polyester, 20% Acrylic, 13% Cotton, 7% Wool  
Martindale: 20,000



**Gunmetal**  
R7 Sherpa 0312 Gunmetal  
38% Cotton, 52% Viscose, 10% Linen  
Martindale: 30,000

### IMPORTANT

- The swatches represented in this catalogue may differ slightly from actual.
- Please request a swatch prior to confirming your order.
- Options as at March 2025. \*Not all fabrics available on all models. Talk to our sales team.

### SPECIFICATIONS

Composition varies by material.

[globewest.com.au/upholstery-customisation-international-brands](http://globewest.com.au/upholstery-customisation-international-brands)



NATADORA Morocco Modular Sofa in Speckle Boucle

## Woven Custom Upholstery Options



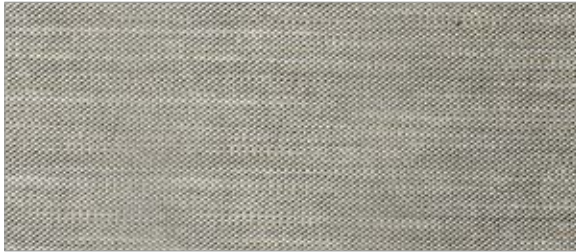
**Coast Blend**  
R2 Flanders 0010 Coast  
55% Linen, 45% Cotton  
Martindale: 29,000



**Igloo**  
R3 Alice 1063 Igloo  
100% Polyester  
Martindale: 84,000



**Cria**  
R4 Alpaca 3148 Cria  
94% Polyester, 6% Cotton  
Martindale: 100,000



**Beige Speckle**  
R4 Finestre 0204 Martini  
49% Cotton, 32% Viscose, 16% Linen, 3% Polyester  
Martindale: 20,000



**Latte**  
R4 Lombardia 0529 Dove  
46% Viscose, 36% Cotton, 16% Linen, 2% Polyester  
Martindale: 30,000



**Army**  
R2 Summer 008 Army  
62% Cotton, 20% Linen, 18% Viscose  
Martindale: 35,000



**Harbour Grey**  
R2 West Lake 07 Harbour Grey  
52% Polyester, 25% Acrylic, 10% Viscose, 7% Linen, 6% Cotton  
Martindale: 100,000



**Toffee**  
R7 Sherpa 0304 Toffee  
38% Cotton, 52% Viscose, 10% Linen  
Martindale: 30,000



**Clay**  
R1 Nano-Suede 0110-03 Clay  
100% Polyester  
Martindale: 20,000



**Yak**  
R7 Sherpa 0108 Yak  
38% Cotton, 52% Viscose, 10% Linen  
Martindale: 30,000

### IMPORTANT

- The swatches represented in this catalogue may differ slightly from actual.
- Please request a swatch prior to confirming your order.
- Options as at March 2025. \*Not all fabrics available on all models. Talk to our sales team.

### SPECIFICATIONS

Composition varies by material.

[globewest.com.au/upholstery-customisation-international-brands](https://globewest.com.au/upholstery-customisation-international-brands)

## Woven Custom Upholstery Options



**Woven Red Clay**  
R4 Gutai 7801 Cat's Paw  
66% Polyester, 24% Polychlal, 6% Cotton, 4% Wool  
Martindale: 25,000



**Auric**  
R3 Sahara 0008 Auric  
68% Cotton, 27% Linen, 5% Polyester  
Martindale: 30,000



**Safron**  
R6 Villa 0103 Safron  
48% Polyester Cotton, 25% Cotton, 24% Polyester, 3% Wool  
Martindale: 30,000



**Amber**  
R4 Lombardia 0513 Corten  
46% Viscose, 36% Cotton, 16% Linen, 2% Polyester  
Martindale: 30,000



**Ocre Fleece**  
R7 Fleece 0006 Ocre  
45% Recycled Polyester, 30% Wool, 11% Viscose, 9% Acrylic, 5% Polyamid  
Martindale: 30,000



**Russet**  
R3 Sahara 0015 Russet  
68% Cotton, 27% Linen, 5% Polyester  
Martindale: 30,000



**Blackberry Velvet**  
R6 Conte 1116 Blackberry  
93% Cotton, 7% Rayon  
Martindale: 50,000

### IMPORTANT

- The swatches represented in this catalogue may differ slightly from actual.
- Please request a swatch prior to confirming your order.
- Options as at March 2025. \*Not all fabrics available on all models. Talk to our sales team.

### SPECIFICATIONS

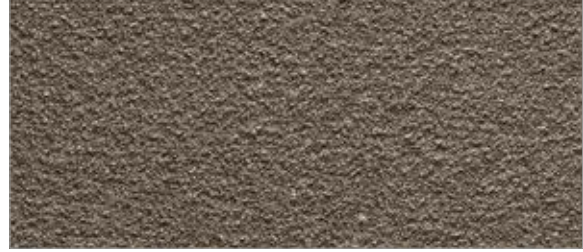
Composition varies by material.

[globewest.com.au/upholstery-customisation-international-brands](https://globewest.com.au/upholstery-customisation-international-brands)

## Woven Custom Upholstery Options



**Cigar**  
R3 Atlas 0005 Cigar  
60% Polyester, 20% Acrylic, 13% Cotton, 7% Wool  
Martindale: 20,000



**Bay**  
R3 Atlas 0004 Bay  
60% Polyester, 20% Acrylic, 13% Cotton, 7% Wool  
Martindale: 20,000



**Olive**  
R1 Nano-Suede 04 Olive  
100% Polyester  
Martindale: 20,000



**Oyster Velvet**  
R6 Conte 1112 Oyster  
93% Cotton, 7% Rayon  
Martindale: 50,000



**Sepia Velvet**  
R6 Conte 1113 Sepia  
93% Cotton, 7% Rayon  
Martindale: 50,000



**Java**  
R2 West Lake 13 Java  
52% Polyester, 25% Acrylic, 10% Viscose, 7% Linen, 6% Cotton  
Martindale: 100,000



**Woven Ink**  
R4 Gutai 7806 Cinder  
66% Polyester, 24% Polychlor, 6% Cotton, 4% Wool  
Martindale: 25,000



**Bedouin**  
R3 Sahara 0020 Bedouin  
68% Cotton, 27% Linen, 5% Polyester  
Martindale: 30,000

### IMPORTANT

- The swatches represented in this catalogue may differ slightly from actual.
- Please request a swatch prior to confirming your order.
- Options as at March 2025. \*Not all fabrics available on all models. Talk to our sales team.

### SPECIFICATIONS

Composition varies by material.

[globewest.com.au/upholstery-customisation-international-brands](https://globewest.com.au/upholstery-customisation-international-brands)





SKETCH Cantaloupe Occasional Chair in Bone Linen

## Woven Custom Upholstery Options



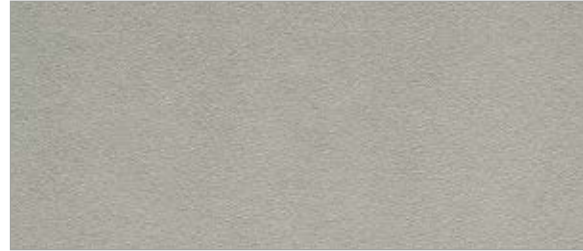
**Soft Fog**  
R3 Sylvia 0912 Haze  
100% Polyester  
Martindale: 80,000



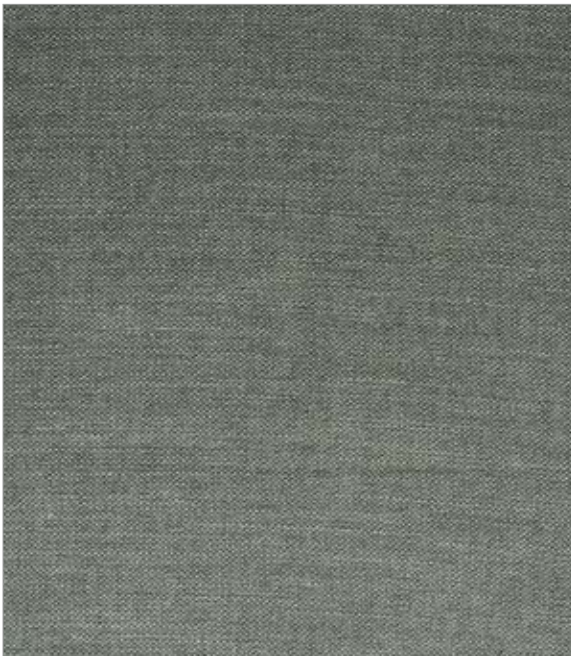
**Dunes**  
R3 Sahara 0004 Dunes  
68% Cotton, 27% Linen, 5% Polyester  
Martindale: 30,000



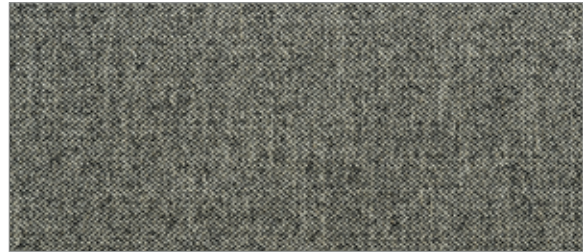
**Mortar Fleece**  
R7 Fleece 0016 Mortar  
45% Recycled Polyester, 30% Wool, 11% Viscose, 9% Acrylic, 5% Polyamid  
Martindale: 30,000



**Whisper**  
R1 Nano-Suede 0110-11 Whisper  
100% Polyester  
Martindale: 20,000



**Haze Grey**  
R2 West Lake 11 Elephant  
52% Polyester, 25% Acrylic, 10% Viscose, 7% Linen, 6% Cotton  
Martindale: 100,000



**Static**  
R5 Puglia 0112 Static  
36% Viscose, 24% Cotton, 24% Polyester, 16% Linen  
Martindale: 25,000



**Weathered Grey**  
R3 Alice 1352 Weathered Grey  
100% Polyester  
Martindale: 84,000

### IMPORTANT

- The swatches represented in this catalogue may differ slightly from actual.
- Please request a swatch prior to confirming your order.
- Options as at March 2025. \*Not all fabrics available on all models. Talk to our sales team.

### SPECIFICATIONS

Composition varies by material.

[globewest.com.au/upholstery-customisation-international-brands](http://globewest.com.au/upholstery-customisation-international-brands)



## Woven Custom Upholstery Options



**Chartreuse**  
R4 Lombardia 0519 Greengold  
46% Viscose, 36% Cotton, 16% Linen, 2% Polyester  
Martindale: 30,000



**Menta**  
R4 Aman 1604 Menta  
42% Polyester, 16% Polychlal, 42% Cotton  
Martindale: 25,000



**Woven Caribbean**  
R4 Gutai 7816 Alga  
66% Polyester, 24% Polychlal, 6% Cotton, 4% Wool  
Martindale: 25,000



**Graphite**  
R3 Lisa 0018 Graphite  
53% Arlyic, 23% Polyester, 13% Cotton, 11% Wool  
Martindale: 50,000



**Seaweed**  
R3 Lisa 0028 Seaweed  
53% Arlyic, 23% Polyester, 13% Cotton, 11% Wool  
Martindale: 50,000



**Pitch**  
R1 Nano-Suede 13 Pitch  
100% Polyester  
Martindale: 20,000



**Duke Blue Velvet**  
R6 Conte 2258 Duke Blue  
93% Cotton, 7% Rayon  
Martindale: 50,000



**Betina**  
R3 Fuge 4010 Bettina  
81% Cotton, 19% Polychlal  
Martindale: 20,000



**Fused**  
R4 Aman 1616 Fused  
42% Polyester, 16% Polychlal, 42% Cotton  
Martindale: 25,000

### IMPORTANT

- The swatches represented in this catalogue may differ slightly from actual.
- Please request a swatch prior to confirming your order.
- Options as at March 2025. \*Not all fabrics available on all models. Talk to our sales team.

### SPECIFICATIONS

Compositiion varies by material.

[globewest.com.au/upholstery-customisation-international-brands](https://globewest.com.au/upholstery-customisation-international-brands)

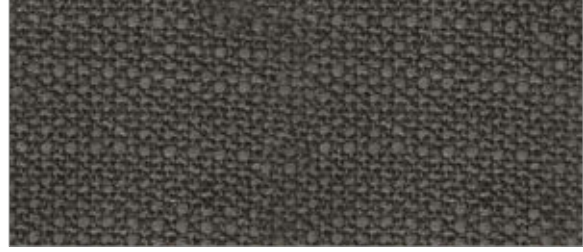


SKETCH Ronda Upholstered Dining Chair in Army Green/Light Oak

## Woven Custom Upholstery Options



**Black Forest**  
R3 Alice 1900 Black Forest  
100% Polyester  
Martindale: 84,000



**Thyme**  
R5 Yuna 3712 Ponte  
56% Cotton, 32% Polychlal, 6% Wool, 5% Polyester  
Martindale: 30,000



**Dark Teal**  
R4 Lombardia 0511 Teal  
46% Viscose, 36% Cotton, 16% Linen, 2% Polyester  
Martindale: 30,000



**Porter**  
R4 Finestre 0202 Porter  
49% Cotton, 32% Viscose, 16% Linen, 3% Polyester  
Martindale: 20,000



**Basil**  
R2 West Lake 17 Basil  
52% Polyester, 25% Acrylic, 10% Viscose, 7% Linen, 6% Cotton  
Martindale: 100,000



**Noir**  
R4 Alpaca 3154 Noir  
94% Polyester, 6% Cotton  
Martindale: 100,000



**Flint**  
R2 West Lake 30 Flint  
52% Polyester, 25% Acrylic, 10% Viscose, 7% Linen, 6% Cotton  
Martindale: 100,000



**Noche Fleece**  
R7 Fleece 0014 Noche  
45% Recycled Polyester, 30% Wool, 11% Viscose, 9% Acrylic, 5% Polyamid  
Martindale: 30,000

### IMPORTANT

- The swatches represented in this catalogue may differ slightly from actual.
- Please request a swatch prior to confirming your order.
- Options as at March 2025. \*Not all fabrics available on all models. Talk to our sales team.

### SPECIFICATIONS

Composition varies by material.

[globewest.com.au/upholstery-customisation-international-brands](https://globewest.com.au/upholstery-customisation-international-brands)



## Leather Custom Upholstery Options



**Leche Leather**  
L1 Alabama 008 Leche  
100% Genuine South American  
Semi-Aniline Leather



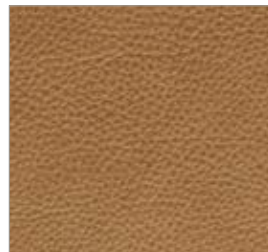
**Limestone Leather**  
L1 Alabama 002 Limestone  
100% Genuine South American  
Semi-Aniline Leather



**Arena Leather**  
L1 Alabama 009 Arena  
100% Genuine South American  
Semi-Aniline Leather



**Sand Leather**  
L2\* Montana 2056 Desert  
100% Genuine European  
Aniline Leather



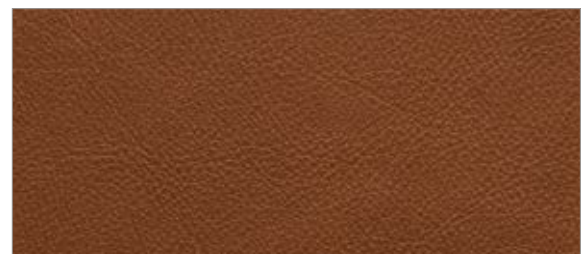
**Caramel Leather**  
L1 Alabama 001 Nut  
100% Genuine South American  
Semi-Aniline Leather



**Pecan Leather**  
L1 Alabama 003 Pecan  
100% Genuine South American  
Semi-Aniline Leather



**Camel Leather**  
L2\* Montana 3031 Canyon  
100% Genuine European  
Aniline Leather



**Heritage Tan Leather**  
L2\* Heritage 002 Saddle  
100% Genuine European  
Aniline Leather



**Mocha Leather**  
LN Seduce 022 Earth  
100% Genuine European  
Nubuck Leather



**Stone Leather**  
L2\* Montana 4017 Anvil  
100% Genuine European  
Aniline Leather

### IMPORTANT

- The swatches represented in this catalogue may differ slightly from actual.
- Please request a swatch prior to confirming your order.
- Options as at March 2025. \*Not all fabrics available on all models. Talk to our sales team.

### SPECIFICATIONS

Composition varies by material.

[globewest.com.au/upholstery-customisation-international-brands](http://globewest.com.au/upholstery-customisation-international-brands)





NATADORA Troubadour Occasional Chair in Pecan Leather/Light Oak

## Leather Custom Upholstery Options



**Loden Leather**  
L1 Nevada 8031 Loden  
100% Genuine South American  
Semi-Aniline Leather



**Kale Leather**  
L1 Alabama 004 Kale  
100% Genuine South American  
Semi-Aniline Leather



**Heritage Hunter Green Leather**  
L2\* Heritage 004 Hunter  
100% Genuine European  
Aniline Leather



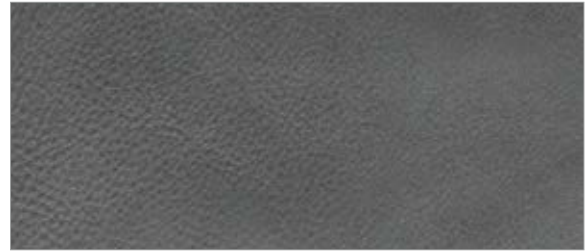
**Moss Leather**  
LN Seduce 013 Moss  
100% Genuine European  
Nubuck Leather



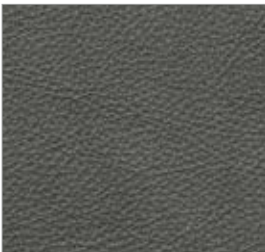
**Cigar Leather**  
L1 Alabama 006 Cigar  
100% Genuine South American  
Semi-Aniline Leather



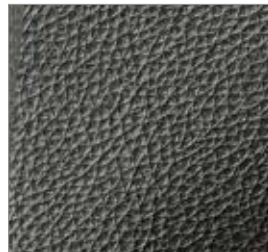
**Heritage Espresso Leather**  
L2\* Heritage 003 Espresso  
100% Genuine European  
Aniline Leather



**Grey Leather**  
L2\* Montana 1034 Iron  
100% Genuine European  
Aniline Leather



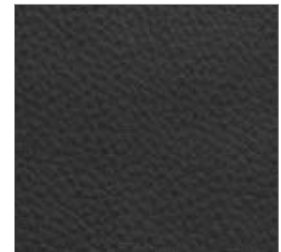
**Nero Leather**  
L1 Nevada 1080 Nero  
100% Genuine South American  
Semi-Aniline Leather



**Charcoal Leather**  
L1 Alabama 007 Charcoal  
100% Genuine South American  
Semi-Aniline Leather



**Armour Leather**  
L1 Alabama 005 Armour  
100% Genuine South American  
Semi-Aniline Leather



**Black Leather**  
L2\* Montana 1048 Coal  
100% Genuine European  
Aniline Leather

### IMPORTANT

- The swatches represented in this catalogue may differ slightly from actual.
- Please request a swatch prior to confirming your order.
- Options as at March 2025. \*Not all fabrics available on all models. Talk to our sales team.

### SPECIFICATIONS

Composition varies by material.

[globewest.com.au/upholstery-customisation-international-brands](http://globewest.com.au/upholstery-customisation-international-brands)

### \*DISCLAIMER - L2 LEATHER

Full-aniline leather is a porous leather and not recommended for high-traffic environments.

Montana and Heritage leather may have variations in colour, visible markings and indentations. These are not considered a fault; they are the natural characteristics of full-aniline leather.

Please note that full-aniline leather cannot be colour matched to the same degree as semi-aniline leather - please speak to our sales team for more information on semi-aniline leather.



SKETCH Glide Barstool in Kale Leather/Black Onyx

## Timber Options

Country of origin:  
North America



White Oak



Light Oak



Bone



Black Onyx



Walnut Stained Oak



Smoked Oak



Genuine Walnut

### IMPORTANT

- The swatches represented in this catalogue may differ slightly from actual.
- Please request a swatch prior to confirming your order.
- Finishes are for both veneer and solid timber.
- Options as at March 2025. \*Walnut Stained Oak is an Oak wood with a walnut colour stain. True Walnut wood is available on selected items, please contact our sales team for availability and pricing.

### SPECIFICATIONS

Composition varies by material.

### DISCLAIMER - GENUINE WALNUT

Genuine Walnut cannot be used on all products.

[globewest.com.au/upholstery-customisation-international-brands](https://globewest.com.au/upholstery-customisation-international-brands)

# GLOBEWEST | WARWICK

GlobeWest select sofas, beds,  
bedheads, bench seats, daybeds, occasional chairs  
and ottomans also available in 20 GlobeWest Core Colours  
and 87 Warwick Commercial Fabric Options

[Learn More](#)



HUGO Monte 3 Seater Sofa in Sunstone  
WINONA Occasional Chair in Caramel Latte

# GLOBEWEST

## RESIDENTIAL | PROJECT

Speak to our expert team about your upholstery customisation needs.

**Filter** 'customisable' products on our website

**Contact** us to request a free fabric swatch

### Visit a Showroom

to experience our customisation hubs and learn more.

#### MELBOURNE

20-22 Parsons Avenue  
Springvale VIC  
T 03 9518 1600  
E [melbourne@globewest.com.au](mailto:melbourne@globewest.com.au)

#### SYDNEY

B3, 35-39 Bourke Road  
(Enter from 42 Maddox Street)  
Alexandria NSW  
T 02 8338 8977  
E [sydney@globewest.com.au](mailto:sydney@globewest.com.au)

#### BRISBANE

102 Arthur Street  
Fortitude Valley QLD  
T 07 3254 4415  
E [brisbane@globewest.com.au](mailto:brisbane@globewest.com.au)

#### ADELAIDE

Seven 18 Trading Co.  
18 Chapel Street  
Norwood SA  
T 0412 060 874  
E [sales@seven18.com.au](mailto:sales@seven18.com.au)

#### PERTH

Roxby Lane  
53 Carrington Street  
Nedlands WA  
T 08 9381 1231  
E [sales@roxbylane.net.au](mailto:sales@roxbylane.net.au)

#### AUCKLAND

Soren Liv  
Evoque, 373 New North Road  
Kingsland Auckland  
T +64 (0) 9 281 2694  
E [sales@sorenliv.com](mailto:sales@sorenliv.com)

Purchases via authorised stockists and design professionals only.

[globewest.com.au/upholstery-customisation](https://globewest.com.au/upholstery-customisation)