

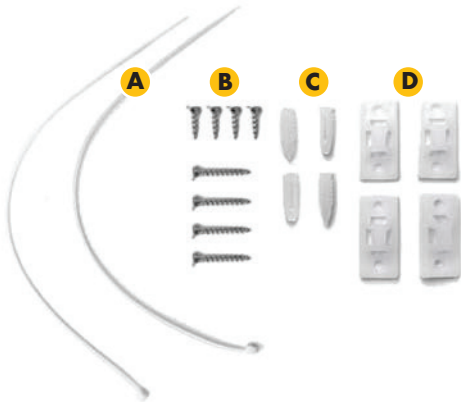
WARNING



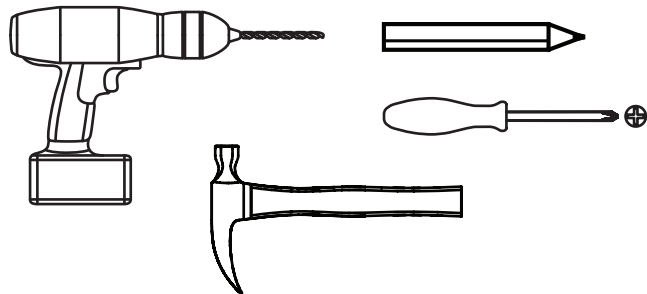
Children have died from toppling furniture. To reduce the risk of furniture toppling:

Cable Tie Anchor Kit

For your safety, we recommend anchoring your anchor kit to a wall stud and aligning. If unsure, please seek professional advice.

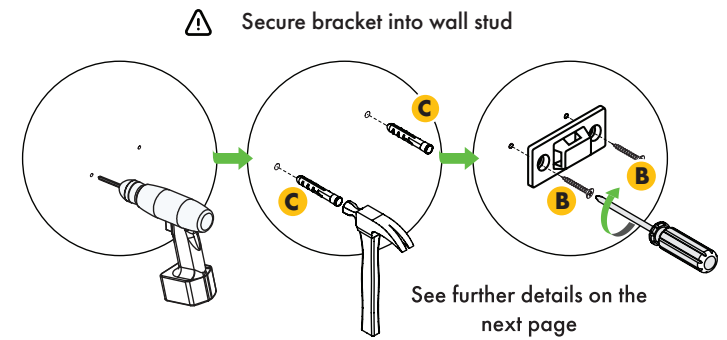


What You Need

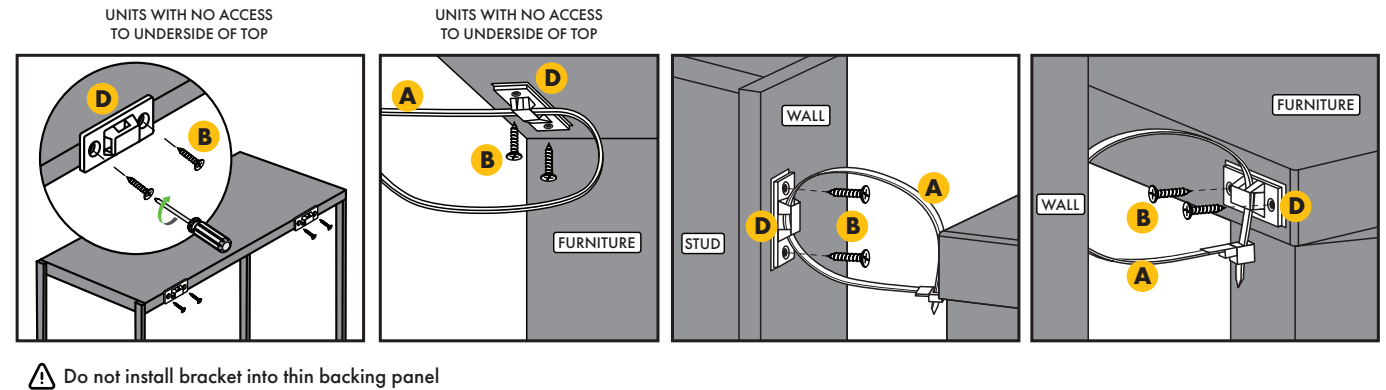


Installation Instructions

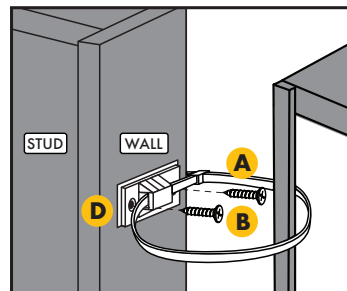
1. Attach a bracket to the wall stud.
2. Move the furniture close to the wall.
3. If there is no pre-installed fixing on the furniture, attach provided brackets to your furniture.
4. Connect the strap to both brackets.
5. Tighten the strap and make sure it's secure.



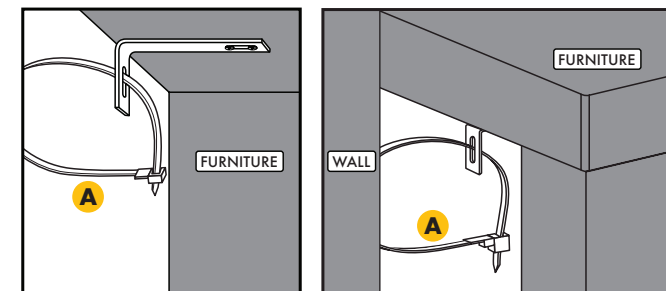
Cable Tie Anchor Kit: Timber and Veneer Products



Cable Tie Anchor Kit: Metal and Marble Products



Cable Tie Anchor Kit: Pre-Installed Fixings



Tips

For your safety when attaching the Anchor Kit

1. Before drilling holes, always check for any electrical wires or plumbing inside the wall.
2. It is important to use appropriate wall fixings for your wall type. Walls are constructed from different materials, eg. Masonry (Solid brick) or plasterboard-lined cavity walls (hollow). Your local hardware store will have suitable fixings and tools and can offer advice based on your wall type.

If you are unsure about any of the above, please seek professional advice.

Wall Fixing Guide



Figure 1a

Wall Material:
Timber or plaster with available timber stud.

Anchoring Device:
Insert screw directly into stud (Figure 1a)



Figure 2a



Figure 2b

Wall Material:
Masonry

Anchoring Device:
Solid wall: Use nylon screw plug provided. (Figure 2a)
Hollow Wall: Toggle Style (Figure 2b)



Figure 3a



Figure 3b

Wall Material:
Plaster without available stud. We do not recommend this method for large units!

Anchoring Device:
Use nylon screw plug provided. (Figure 3a) or suitable Toggle Style (Figure 3b)

Safety

WARNING: To prevent your furniture from toppling:

1. Install and securely attach the anchor kit provided.
2. Place heavy items down low.
3. Never open more than one drawer at a time.
4. Never allow children to stand, climb or hang on drawers, doors or shelves.
5. Do not place televisions or other heavy items on top of this product, unless specifically designed for this product.
6. If placing a television on an entertainment unit, always secure the television with an anchor device.
7. Ensure furniture is placed on a flat, even surface. If leveling feet are installed, adjust these until the product is stable.

Note: Children like climbing on things, especially if there is something up high they want. Household furniture like bookshelves and entertainment units can be attractive to climb. So too, furniture like tallboys where pulled-out drawers act as stairs for climbing.

**DANGER: TOPPLING FURNITURE CAN CAUSE
SERIOUS INJURY OR DEATH.**

Contact Us

For additional information, please contact us:

E: enquiries@globewest.com.au

P: 03 9518 1600

More Information

Injuries and fatalities from toppling furniture can be prevented.

It is important that furniture at high risk of toppling is attached securely to a wall. All our high-risk furniture is supplied with a permanent warning label, anchor kits and installation & safety guide. Do not remove the warning label from the product.

To avoid serious injury or death from toppling furniture, it is crucial to install the anchor kit provided with your item, carefully following the included assembly instructions.

For more information please go to:

www.productsafety.gov.au

<https://www.productsafety.gov.au/about-us/product-safety-news/news/toppling-furniture-and-televisions-anchor-them-and-save-a-child's-life>

<https://www.anchorit.gov/how-to-anchor/how-to-install-a-kit/>

This document was put together using information from:

1. National Retail Association "Best practice guide for furniture and television tip-over"
2. AS/NZS 4935-2009: Domestic furniture – Freestanding chests of drawers, wardrobes and bookshelves/bookcases – Determination of stability
3. Consumer Goods (Toppling Furniture) Information Standard 2024