

# NATADORA SLIPPER



2/25 Image: Yak Sherpa upholstery

Soft curves and organic forms define the Slipper sofa's character, offering an inviting sense of comfort before you even sink into its generous memory-foam seating. With 10 modular components, it adapts effortlessly to a variety of spaces.

## UPHOLSTERY COLOUR

### MATERIALS

Dark Teal	46% Viscose, 36% Cotton, 16% Linen, 2% Polyester
Seaweed*	53% Acrylic, 23% Polyester, 13% Cotton, 11% Wool
Yak Sherpa	52% Viscose, 38% Cotton, 10% Linen

## DIMENSIONS

SEAT DEPTH	Various
SEAT HEIGHT	400mm
ARM HEIGHT	315mm
BASE HEIGHT	30mm

## COVERS

Non-Removable

## PROFILE

Medium

## FILLING

Foam, Feather  
& Ball Fiber Fill

## JOINING BRACKETS

Included

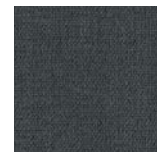
## NOTES

Modulars are ordered as separate units available in left (LFT) or right (RIT) facing orientation. As you stand in front of the sofa the arm will be in either the left or right side of the modular component.

Please refer to website for care instructions.

As product specifications sometimes change, please confirm with your GlobeWest salesperson before placing your order.

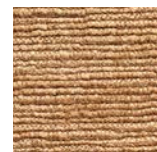
## UPHOLSTERY COLOURS



Dark Teal  
(DKTL)



Seaweed\*  
(SEA)



Yak Sherpa  
(YKSH)

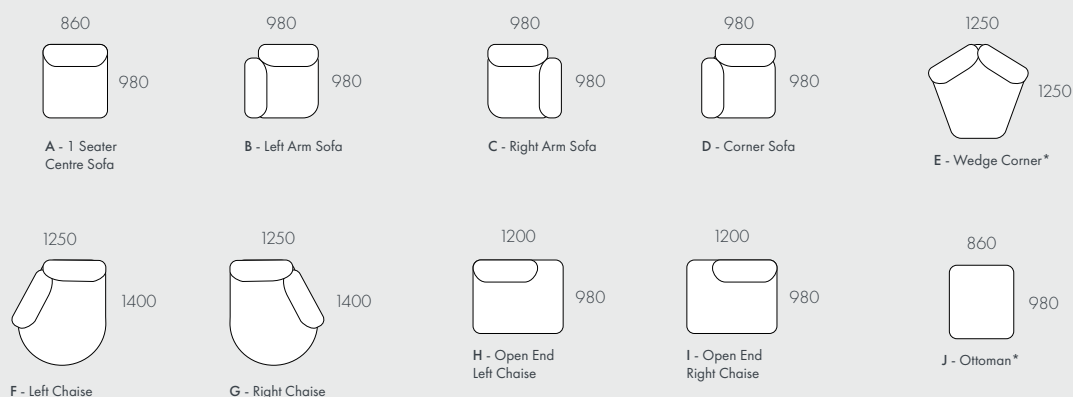
\*Indent pieces are made to order, please contact our Sales Team for more information.

## CUSTOMISATION AVAILABLE

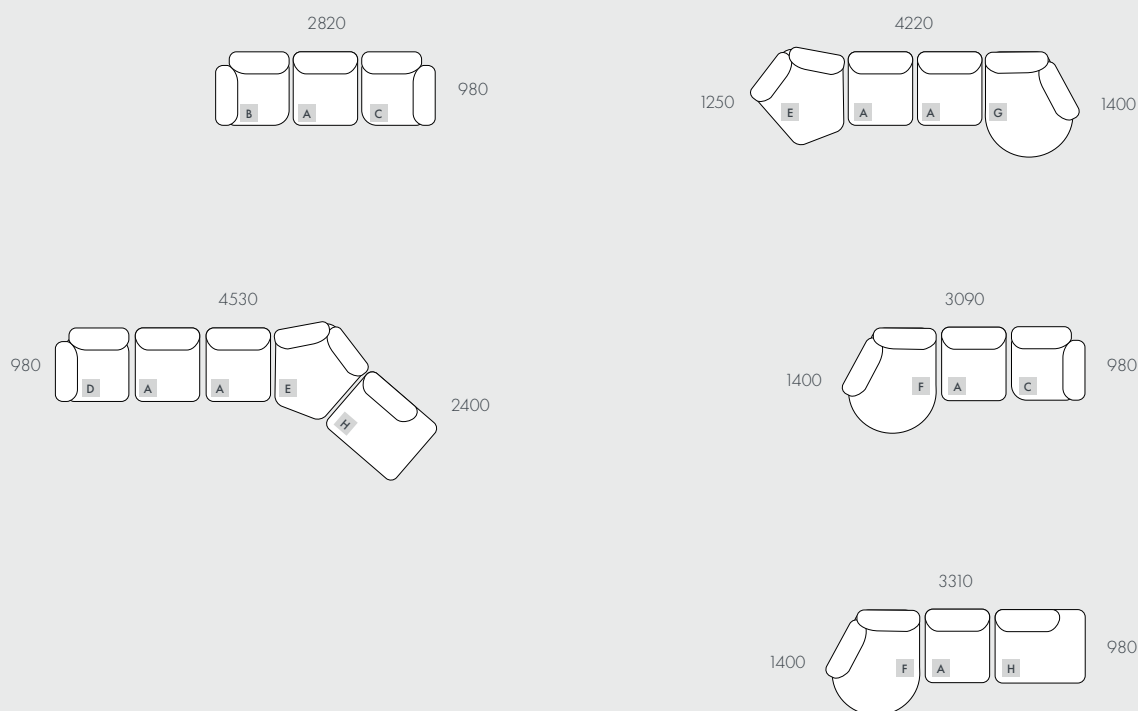
Visit a showroom to discover our thoughtfully curated palette of custom fabrics.

# NATADORA SLIPPER

## COMPONENTS



## MODULAR OPTIONS



All dimensions shown are millimetres.

KEY	DESCRIPTION	PRODUCT CODE	WIDTH	DEPTH	HEIGHT
A	1 Seater Centre Sofa	SOF-NAT-SLIP1S-CTR	860	980	715
B	Left Arm Sofa	SOF-NAT-SLIP1S-LFT	980	980	715
C	Right Arm Sofa	SOF-NAT-SLIP1S-RIT	980	980	715
D	Corner Sofa	SOF-NAT-SLIP-CNR	980	980	715
E	Wedge Corner*	SOF-NAT-SLIP-WDG-CNR	1250	1250	715
F	Left Chaise	SOF-NAT-SLIP-LFT-CHS	1250	1400	715
G	Right Chaise	SOF-NAT-SLIP-RIT-CHS	1250	1400	715
H	Open End Left Chaise	SOF-NAT-SLIP-OPEN-LFT	1200	980	715
I	Open End Right Chaise	SOF-NAT-SLIP-OPEN-RIT	1200	980	715
J	Ottoman*	SOF-NAT-SLIP-OTT	860	980	400

\*Indent pieces are made to order, please contact our Sales Team for more information.

## CONTACT US

To find out more information or place an order please contact us.

T. 1800 722 366

E. [enquiries@globewest.com.au](mailto:enquiries@globewest.com.au)

Showrooms: Melbourne, Sydney, Brisbane, Adelaide and Perth.